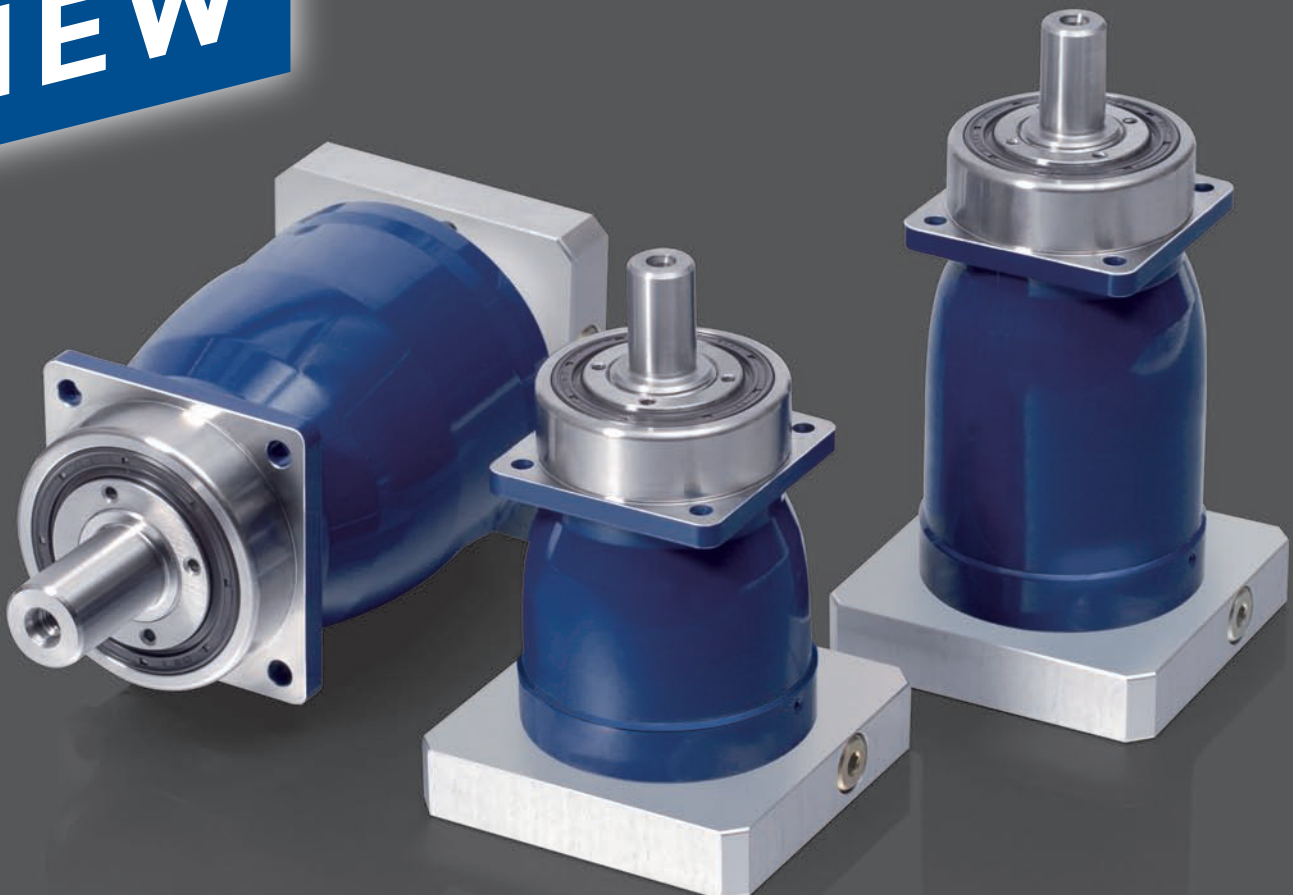


The new generation of the MPR design series is here!

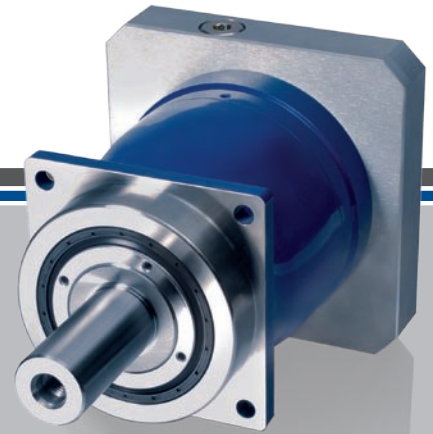
Low-backlash planetary gearboxes from VOGEL combines maximum flexibility with high power density.

- Installation as desired through universal design type
- Ideal for servo applications with high rotation speed ranges
- Large continuous transmission ratio range
- Reduced noise emission through highest level of concentricity accuracy and through the special gearing geometry of the MPR design series, which makes gradual meshing possible
- Up to 20% higher torques than spur toothed planetary gearboxes
- Simplified flexible motor attachment
- Excellent gearbox service life

NEW



TECHNICAL DATA



Gearing

Helical gearing

Sizes

050, 100, 200, 300

One-stage transmission

In integer form and mathematically exact:

- i = 3.0
- i = 4.0
- i = 5.0
- i = 7.0
- i = 10.0

Two-stage transmission

In integer form and mathematically exact:

- i = 12.0
- i = 16.0
- i = 20.0
- i = 25.0
- i = 28.0
- i = 35.0
- i = 40.0
- i = 50.0
- i = 70.0
- i = 100.0

Lubrication

Life-time lubrication with synthetic gear oil

Protection type

IP65

- Dust-tight
- Hose-proof

Size	Number of stages	Circumferential backlash		Nominal output torque	Max. input speed
		Standard [arcmin]	Reduced [arcmin]	M_{d2} [Nm]	n_{1max} [rpm]
MPR 050	1-stage	≤ 4	≤ 2	up to 29	up to 6000
	2-stage	≤ 6	≤ 4	up to 29	up to 6000
MPR 100	1-stage	≤ 4	≤ 2	up to 85	up to 6000
	2-stage	≤ 6	≤ 4	up to 85	up to 6000
MPR 200	1-stage	≤ 4	≤ 2	up to 200	up to 6000
	2-stage	≤ 6	≤ 4	up to 200	up to 6000
MPR 300	1-stage	≤ 4	≤ 2	up to 400	up to 6000
	2-stage	≤ 6	≤ 4	up to 400	up to 6000

Further specifications on inquiry. Right to technical changes reserved.

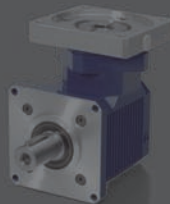
Our spectrum:



Spiral bevel gearboxes



Bevel helical gearboxes



Servo spiral bevel gearboxes



Phase shifter gearboxes



Low-backlash planetary gearboxes



Planetary gearboxes